

## Patient information

# What to ask your care team whilst in hospital

The West Suffolk Hospital encourages you to ask questions about your care while you are a patient in this hospital. Here are some questions you may wish to ask.

### You may like to ask your:

#### 1 What is wrong with me?

A few examples.....

- What is my diagnosis / problem
- What does acute, chronic and long term conditions mean
- Will I have tests to find out what is wrong with me



#### 2 What are you doing about it?

A few examples.....

- What investigations are you doing
- What treatment will I need
- How long will it take for the tests to come back



#### 3 Do I need to stay in hospital?

A few examples.....

- Why can't I have this treatment at home
- How long will I need to stay in hospital

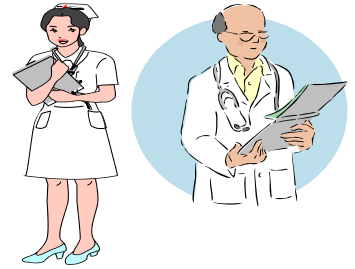


## You may like to ask your:

### 4 Will I see a doctor every day I am here?

A few examples.....

- Which doctor can discharge me
- Can I be discharged at the weekend
- If my regular doctor is not on duty who will know what is my treatment plan and discharge plan



### 5 Will I get better?

A few examples.....

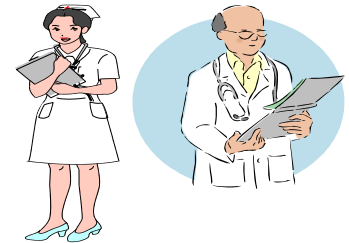
- Will I be cured
- Will I improve
- Will I always have some problems



### 6 Will I die?

A few examples.....

- What does DNAR mean
- Will my family be told my diagnosis / problem
- Will I be told



### 7 When can I go home?

A few examples.....

- What needs to be done before I am safe to go home
- Am I likely to be re admitted
- Who will care for me if I am sent home



### 8 What can I do to help myself and my illness?

A few examples.....

- Will I be restricted in any way
- How can I become independent
- Are there any exercises I can learn to do
- Is there a special diet that I need to take

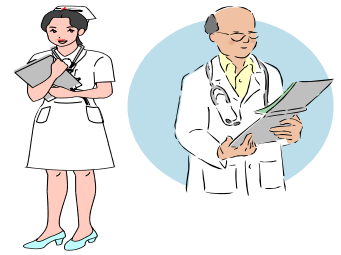


## You may like to ask your:

### 9 Will I need to come back to hospital?

A few examples.....

- Will the doctors need to see me again after I go home
- Are there other services that can help me stay at home
- Will I need to come back for just a day or more



### 10 Will my GP know what is going on?

A few examples.....

- Will my GP get a letter from the hospital
- Do I need to make an appointment to see the District or Practice Nurse



### 11 What can my friends and family do?

A few examples.....

- Who will look after the people I care for
- Who will look after my pets



### 12 Who will tell me about my medicines?

A few examples.....

- Will I need to throw any tablets away that I have already at home
- Will my GP know about any new tablets I am on



If you require further information please do not hesitate to ask a Ward Nurse / Care Co-ordinator / Ward Clerk who can advise you.

**Here are some useful addresses and contacts:**

[www.wsh.nhs.uk](http://www.wsh.nhs.uk)

[www.suffolkcc.gov.uk](http://www.suffolkcc.gov.uk)

[www.ageuk.org.uk](http://www.ageuk.org.uk)

**Welcome Home Service Tel: 01284 712942**

*If you would like any information regarding access to the West Suffolk Hospital and its facilities please visit the website for AccessAble (the new name for DisabledGo)*  
<https://www.accessable.co.uk/organisations/west-suffolk-nhs-foundation-trust>



© West Suffolk NHS Foundation Trust